

ProMinent Overview 2018

ProMinent®



www.prominentfluid.com.au

METERING | MEASUREMENT & CONTROL TREATMENT | DISINFECTION | IMPLEMENTATION

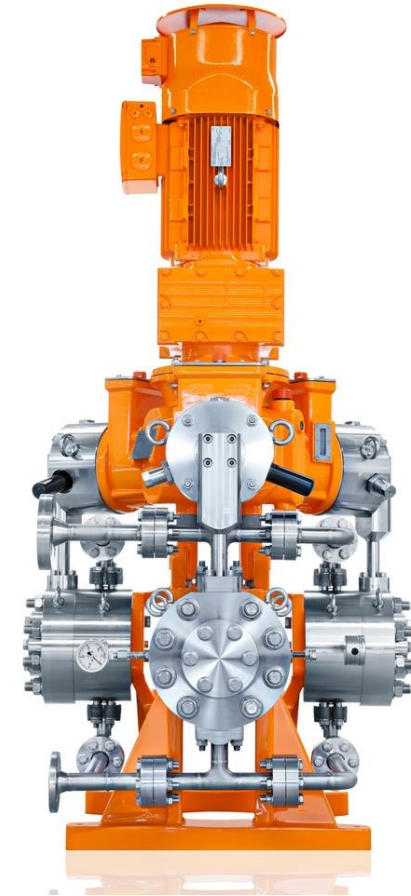
Solenoid Pumps



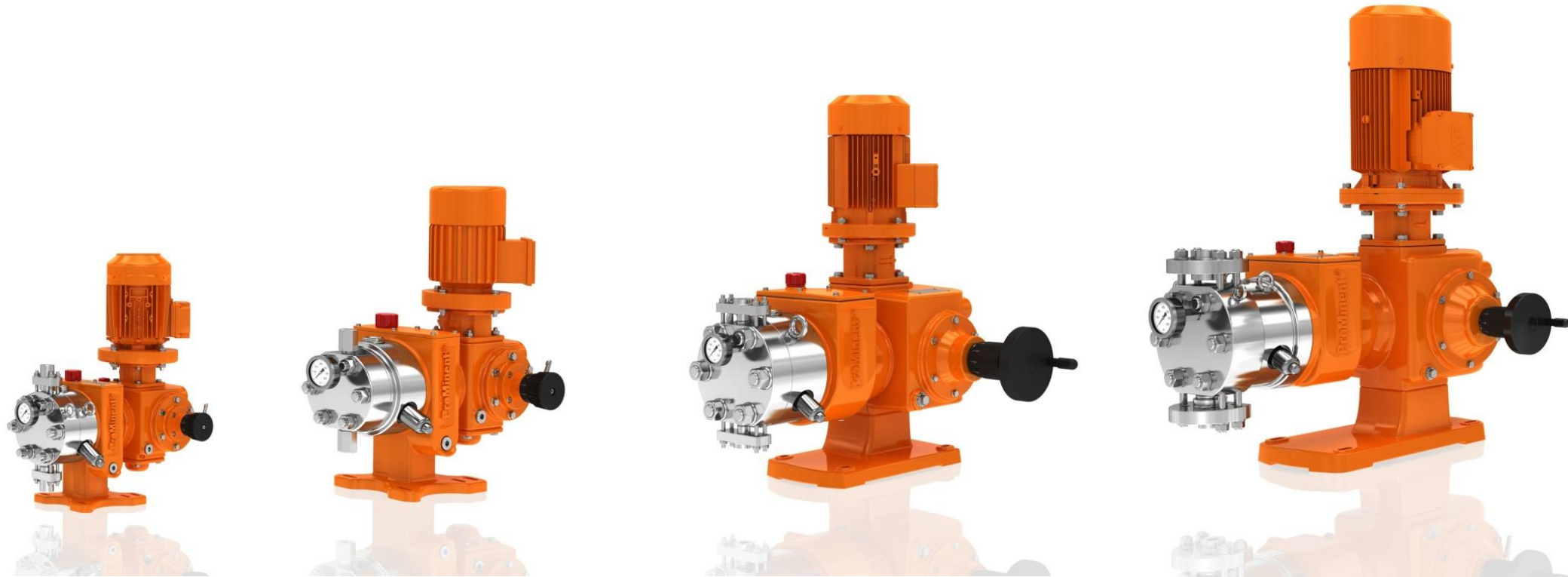
Motor Driven Pumps



Large Motor Driven Pumps



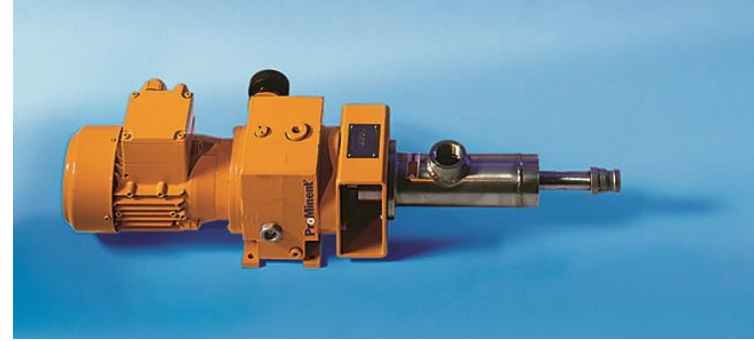
Orlita – Evolution 1,2,3, & 4



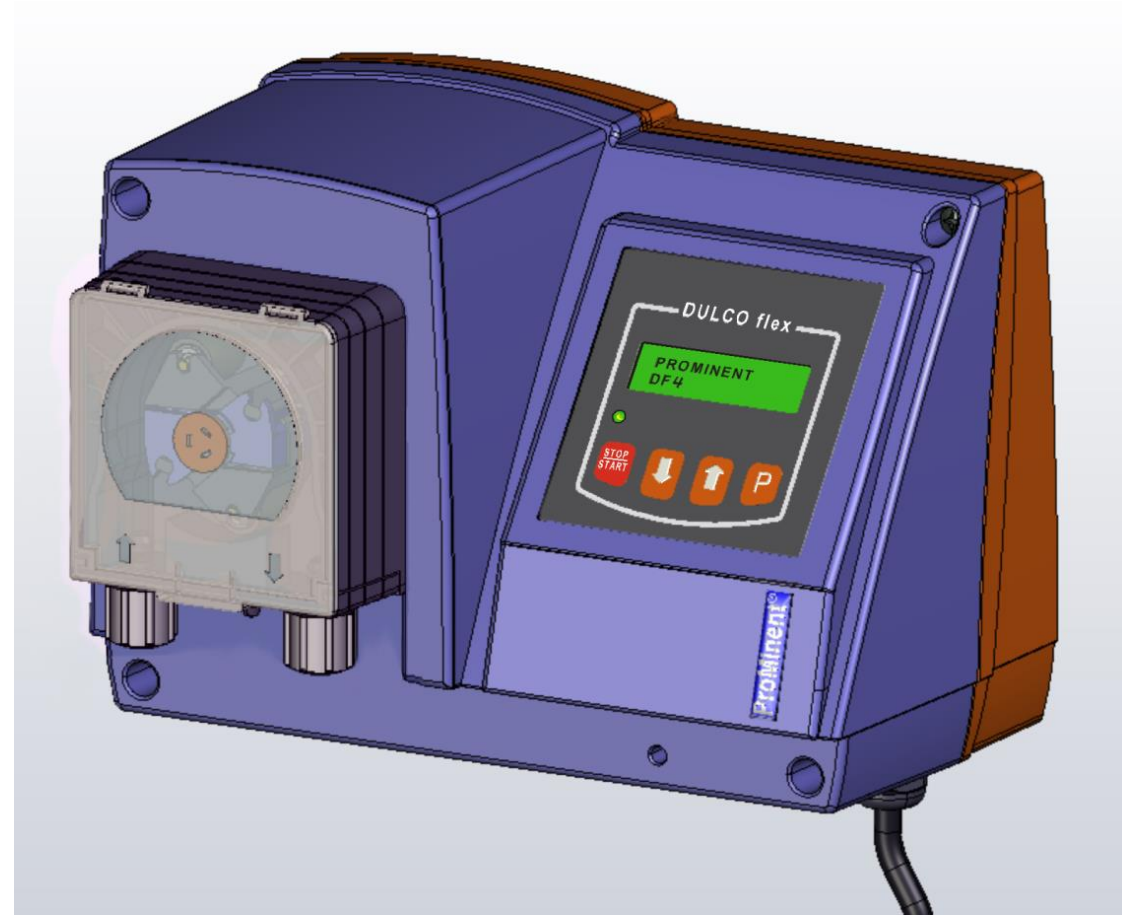
Really Big Pumps



Other Types of Pumps



Tube Pumps



Hose Pumps



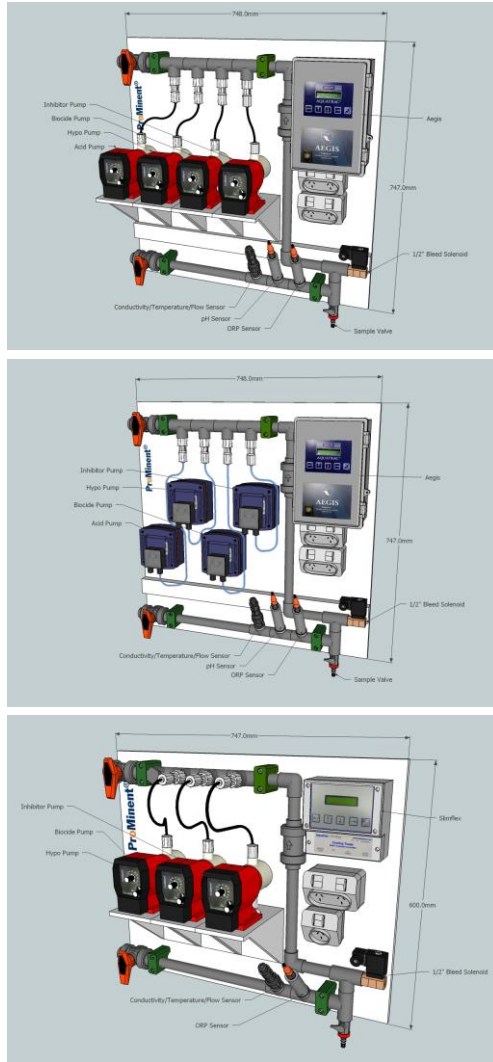
Spectra Progressive Cavity Pumps



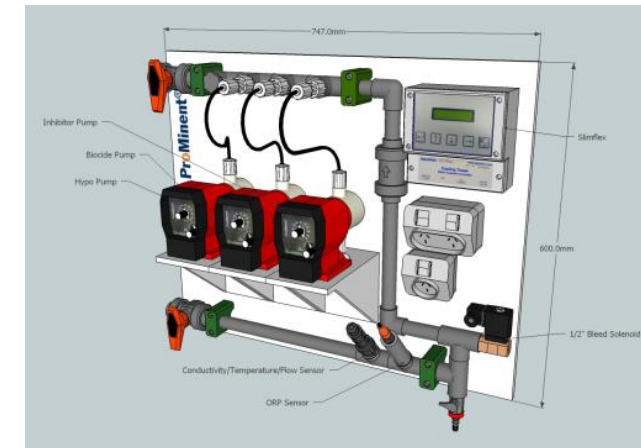
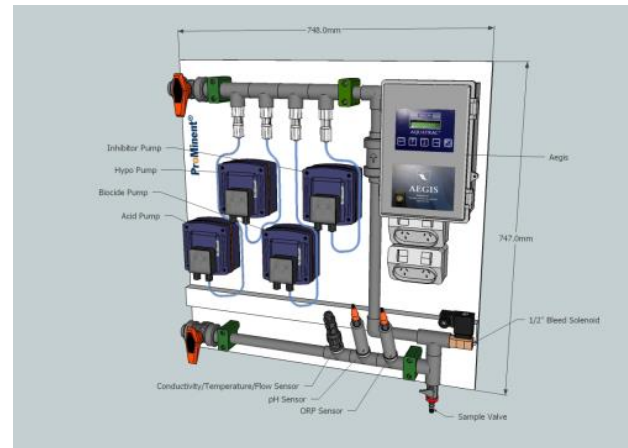
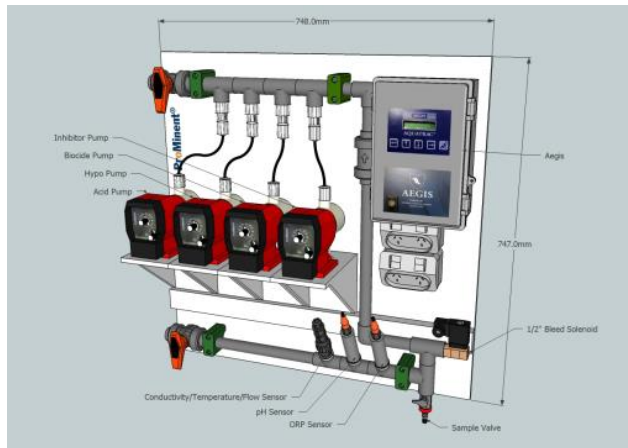
Customised Packages



Liquid Poly Packages



Cooling Tower Packages



Packages



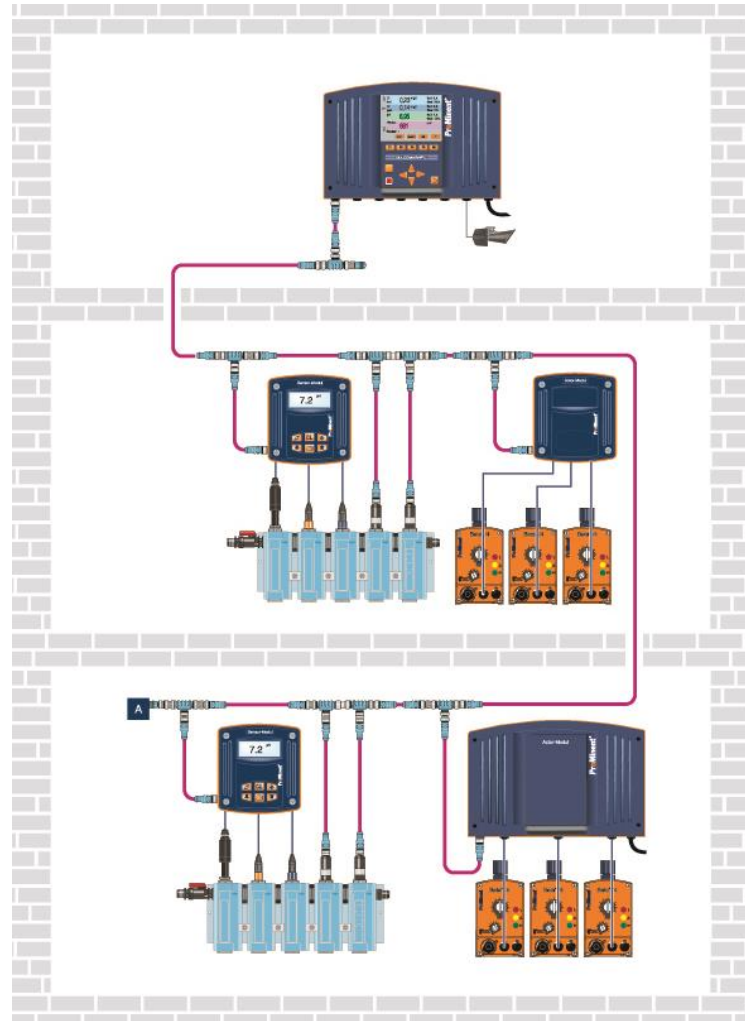
Instruments and sensors



Backboard Mounted Instrumentation for pH, ORP Free and Total Chlorine



Pool Systems



Pool Water Chemistry Control Packages

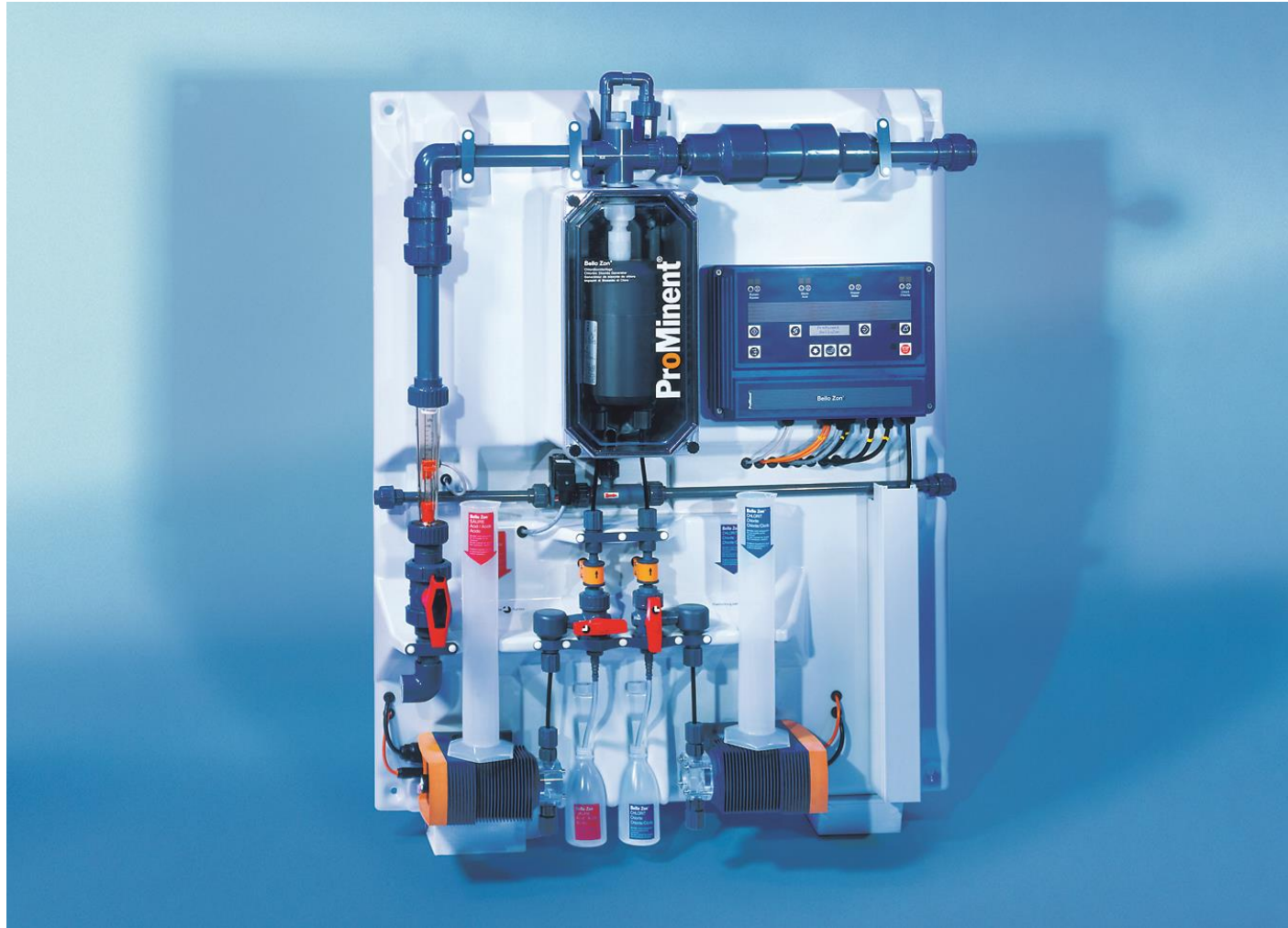


Electrochlorinator
Chlorine from salt



Dulcomarin
Controllers

Chlorine Dioxide



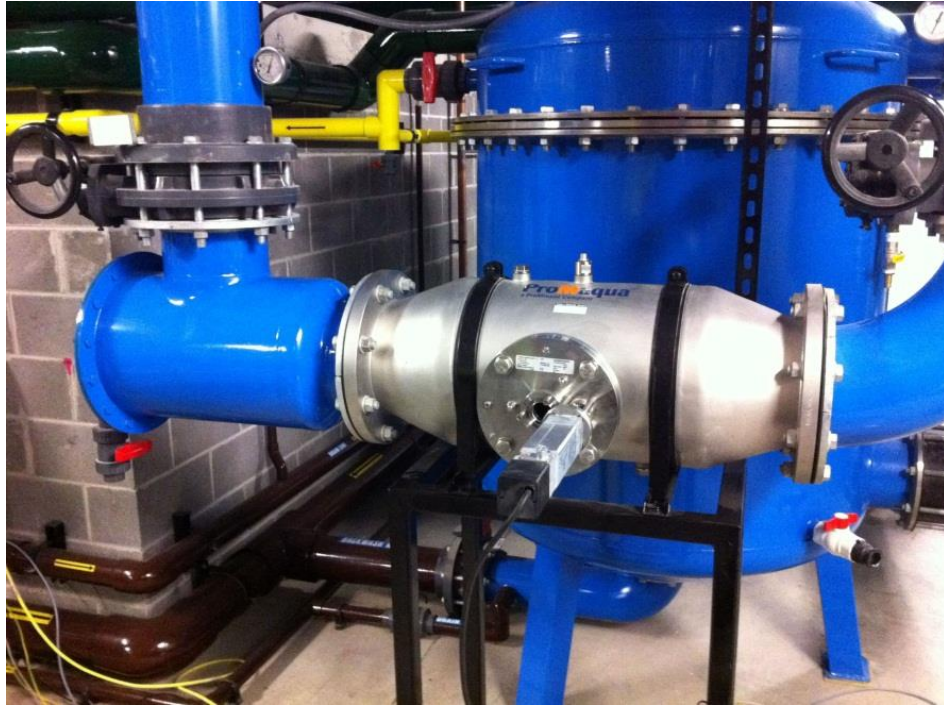
Ozone



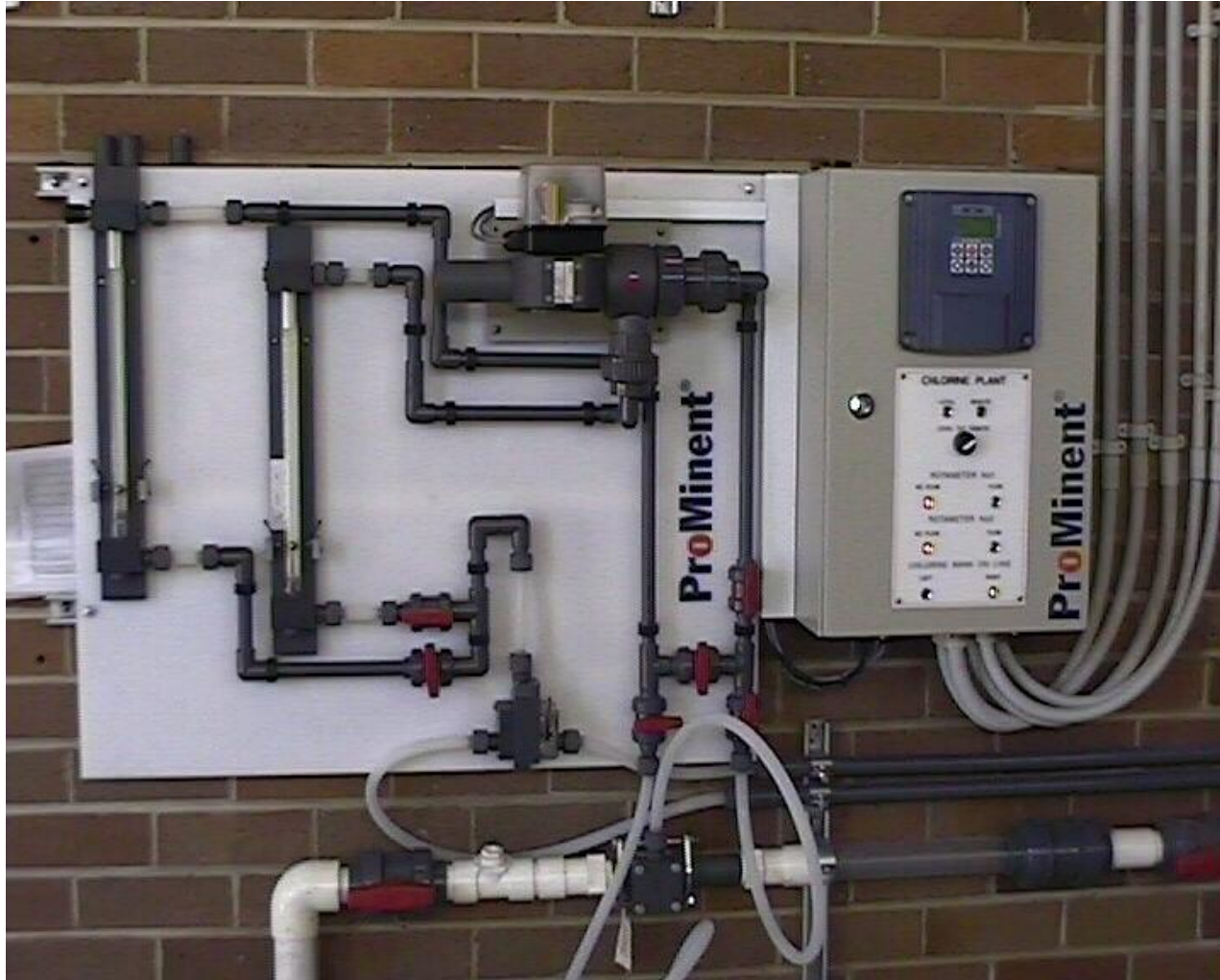
UV Systems



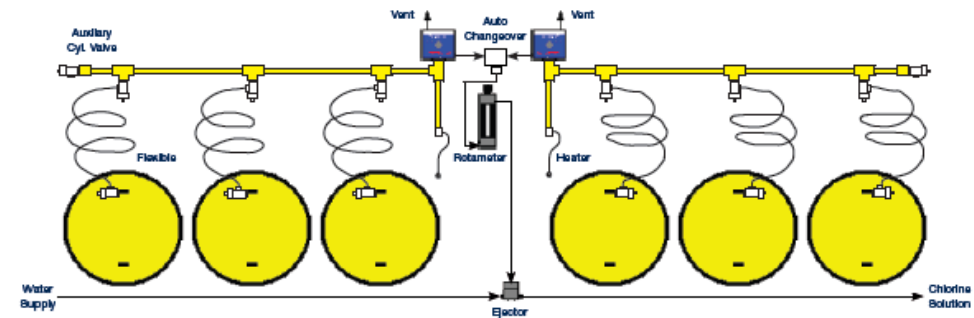
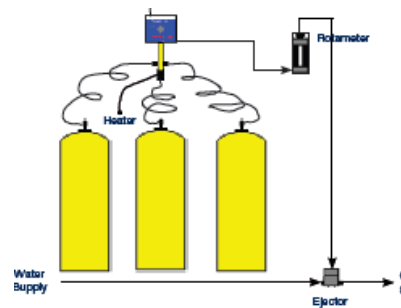
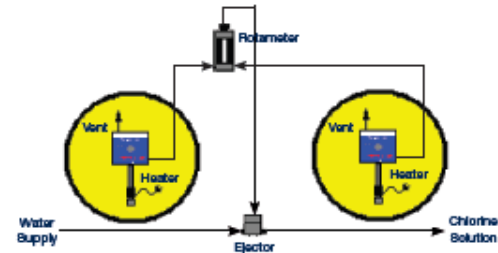
Installed Systems



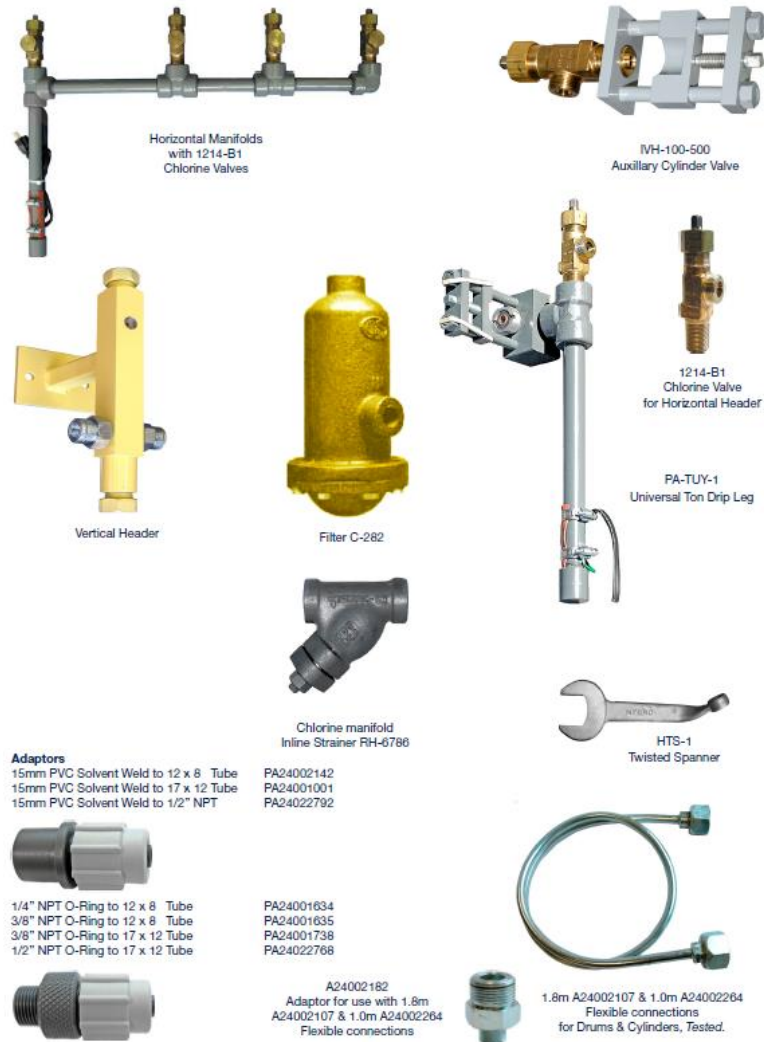
Gas Chlorination



Gas Chlorination



Gas Chlorination Accessories



Cylinder Scales



Leak Detector



Drum Scales



Cylinder & Drum Automatic Shut Down



Control Valve

Tomal Systems



Projects



Fluoride Systems



5kg Saturator

Saturators designs for various size water supplies are:

- Up to 4 MI/day - 5kg fluoride jars with ProMinent's patented jar cutter loader with spray rinse.
- Up to 10 MI/day - Vacuum load saturator with 250, 500 Or 1000 litre solution tank
- Up to 50 MI/day – Vacuum load sodium silicofluoride package
- Above 50 MI/day – Bulk bag sodium silicofluoride

ProMinent's 5-250 sodium fluoride saturator was designed for small water supplies up to around 2-4 MI/day.

It can however be used for much larger plants than this.

Featuring patented
Container cutter loader
Water flushing device



ProMinent supply sodium fluoride granules packaged in 5 kg screw-top, foil-sealed plastic containers.

To ensure easy and dust free loading of the 5 kg containers, ProMinent designed and patented a special loader to accept the containers, slice the seal, and allow the powder to dump into the saturator tank.

The container can then be flushed, by the push of a button, with clean water to allow the jar to be easily disposed of in the normal plastic recycling.

Fluoride Systems

Vacuum load Sodium Fluoride saturator in a transportable shed



- ProMinent have a sodium fluoride saturation system suitable for adding fluoride into water supplies up to about 10 MI/day
- ProMinent's standard saturator is a down flow type with a vacuum loader for loading from 25 kg bags.
- We recommend the use of sodium fluoride granules.

Vacuum load Sodium Silicofluoride



Fluoride Systems



**Sodium
Silicofluoride
Vacuum Load Bulk
Bag Package**



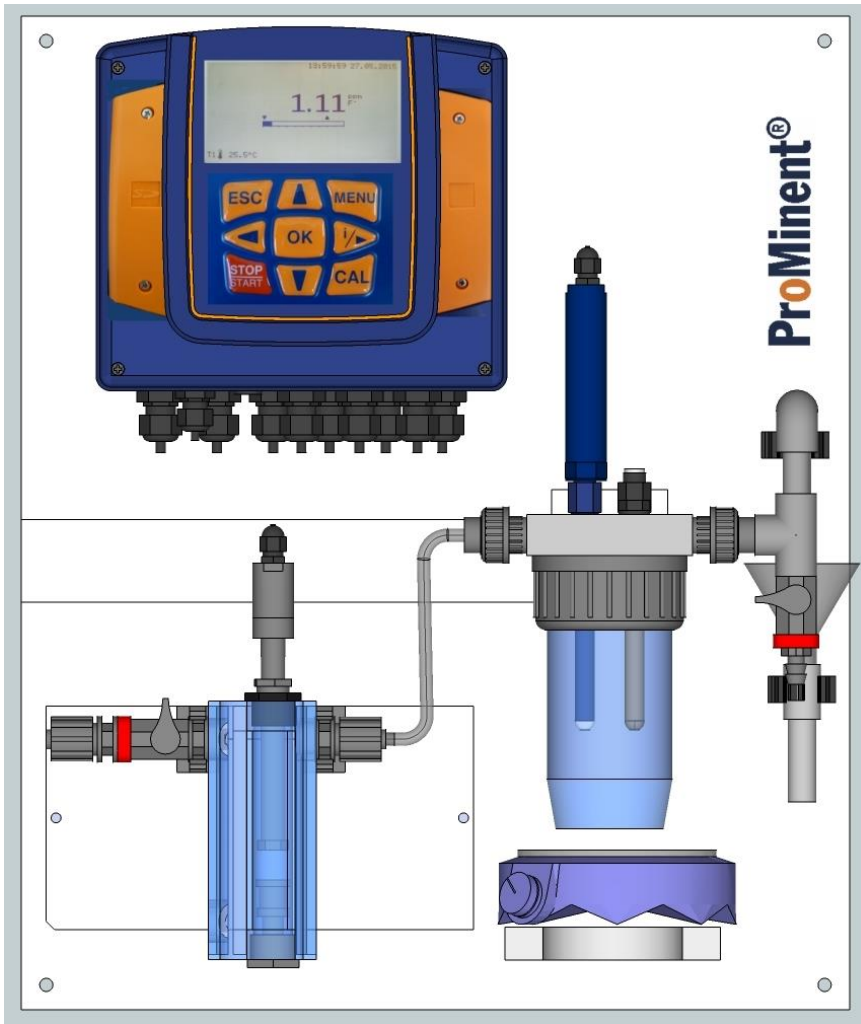
On water supplies with rapid flow rate changes, a 2 tank batch make up system can be supplied. Tank 1 makes up a constant known solution strength and is sized to retain the solution for at least 10 minutes. Solution then gravity feeds to tank 2 when lower level in tank 2 is reached.

The two tank system is also suitable for when there are two dosing points and you wish to handle them with one makeup package.



**Bulk Bag Fluoride
Package using
Flexicon bag unloader**

Fluoride Analyser



The analyser is normally supplied as backboard mounted with temperature, fluoride and reference electrodes.

A magnetic stirrer is also provided to assist with the single or two point calibration.

Standard unit measures free fluoride with an optional unit available for total.

No buffer solutions required for free fluoride unit so sample water can be reused.

Also available in a comparison package with dual sensors.

Calcium Hypochlorite



The **ProMinent ProCal** is most suitable for chlorine dosing into swimming pools. The granules are transferred into a mixing tank from the hopper where they are blended with the incoming water. The feeder is operated either manually or in response to the amount of chlorine required in the pool water, by a chlorine instrument. It comes with automatic acid clean.

Capacity: to 6 kg/hr, (adjustable).



ProMinent's ProDos calcium hypochlorite preparation and dosing package has been designed for Small capacity water supplies, multiple swimming pool dosing and general chlorine dosing applications and consists of:

- HDPE enclosure
- 60 kg calcium hypochlorite storage hopper,
- solution tank with mixer and level controls for accurate batch make-up (max. 2%)



Bulk Bag Installation



PAC Package with Vacuum Loader



Manual Bag Load PAC

Service for ProMinent Equipment



Spare Parts

ProMinent have been supplying chemical dosing systems in Australia for over 28 years and carry extensive spare parts for all our products. We have installation and service personnel available for anywhere in Australia.

Breakdown Service

Should your equipment break down, for whatever reason, we will make every attempt to provide replacement parts by overnight transport and service personnel, if required, at the earliest available time.

Accessories



Tube to Union



Tube to Tube



20 x 1.5 to Solvent Weld



Hose Tail to Union



Tube to BSP



20 x 1.5 to 20 x 1.5 FM



BSP to Union



Solvent Weld to Union



Tube to Solvent Weld



20 x 1.5 to BPS

Typical Probe Holders

